
Sales Tax Automation System

AR-1129

Overview

This Extended Solution provides a method for creating Sales Tax Schedules via a Sales Tax Automation Import program which uses the CCH ZIP Sales Database. These Tax Schedules are then associated with Zip Codes. Utilities are provided for updating Customers, Ship To Addresses, A/R documents and S/O documents with these Tax Schedules based on their Zip Code.



This Extended Solution affects only the Accounts Receivable and Sales Order modules.

Installation

Before installing this Extended Solution, please verify that the version level(s) printed on the CD label are the same as the version level(s) of the MAS 90 MAS 200 module(s) you are using. For further information, please see the Upgrades and Compatibility section below. Check your Shipping Manifest for a complete list of Extended Solutions shipped.

For detailed installation instructions, please refer to the Sage website at:

http://support.sagesoftwareonline.com/mas/extended_solutions/main.cfm

Installing Your Extended Solutions under Windows

From a CD

If you have the *autorun* function turned on for your PC, the installation program will start up automatically. If not, find the **autorun.exe** file on your CD-ROM drive and double-click it to start the installation program. Follow the on-screen instructions.

From the Sage FTP site

When your Extended Solution is ready to be downloaded, you will receive an email from 'extendedsolutions.na@sage.com' telling you that it is ready. The email will contain the Customer Name, Cross Reference, a case-sensitive Password, a link via which you can download your Extended Solution, instructions and a Shipping Manifest. If you have any problems with this order, please email extendedsolutions.na@sage.com and we will assist you during normal business hours.

Extended Solutions Control Center

Installing any Extended Solution will add an Extended Solutions Control Center to the MAS 90 MAS 200 Library Master Utilities menu. When you open the Control Center, the following options will be available:

- Extended Solutions Manuals

Extended Solutions

- Remove Extended Solutions
- Unlock Extended Solutions
- Merge Installation Files
- Extended Solutions Setup options

Custom Office

If you customize your MAS 90 MAS 200, then you must run the Update Utility *every time* you install this Extended Solution.

Setup

Upon completion of software installation, you will need to access Extended Solutions Setup from the Accounts Receivable Setup menu. Select this part number and the Setup screen for this Extended Solution will appear (Figure 1). Check the 'Enable Extended Solution' box to activate this Extended Solution. The manual for this Extended Solution can be viewed by clicking the 'Manual' button next to the 'Enable Extended Solution' check box. It can also be viewed via the Extended Solutions Control Center (see Installation, above).

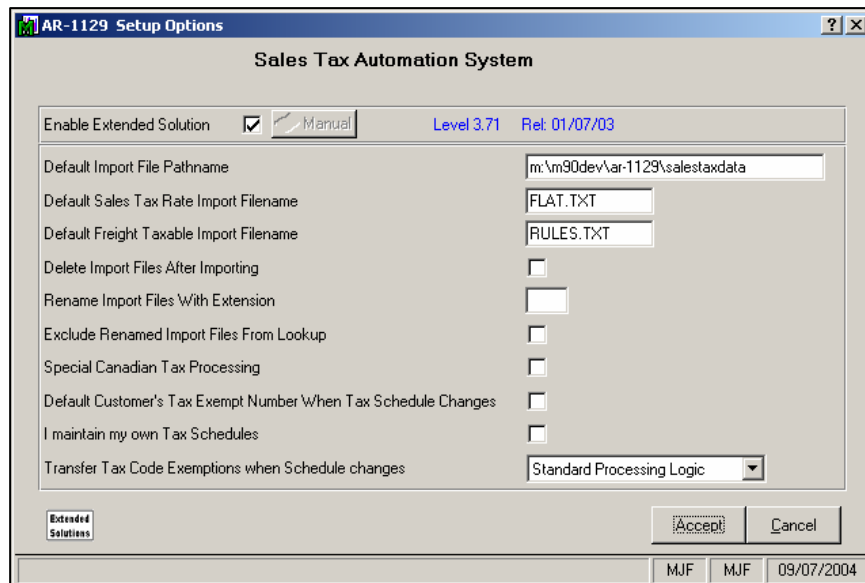


Figure 1

Answer the following prompts:

DEFAULT IMPORT FILE PATHNAME: Enter the path where you loaded the Zip Code/Sales Tax.

DEFAULT SALES TAX RATE IMPORT FILENAME: This prompt will default to the CCH Group ZIPSales' file name for the Sales Tax Rate import file name: FLAT.TXT.

Extended Solutions

DEFAULT FREIGHT TAXABLE IMPORT FILENAME: This prompt will default to the CCH Group ZIPSales' file name for the Freight Taxable import file name: RULES.TXT.

DELETE IMPORT FILES AFTER IMPORTING: Check this box if you want to delete the Zip Code/Sales Tax file after the import is completed. Leave it blank if you do not want to delete the Sales Tax file after importing the data.

RENAME IMPORT FILES WITH EXTENSION: Enter the file extension you want to rename the Zip Code/Sales Tax file with if the 'Delete Import Files after Importing' box is blank.

EXCLUDE RENAMED IMPORT FILES FROM LOOKUP: Check this box if you want to exclude the filename from the Lookup.

SPECIAL CANADIAN TAX PROCESSING: If you check this box, AR-1129's tax schedule lookup will use only the first character of a zip code when it begins with a letter A-Z.

I MAINTAIN MY OWN TAX SCHEDULES: Check this box if you want to maintain your own tax schedules for a state which you have a CCH subscription. When checked, all Refreshes will skip records which contain Tax Schedules which AR-1129 did not create. When unchecked, then Refreshes will replace as many existing Tax Schedules in the files and documents noted below with CCH generated Schedules wherever there is a Zip Code match for it.



It is recommended that this remain unchecked. However, if you choose to employ this, you MUST leave it unchecked with your initial refresh of all files. When initial refresh has been completed, then change the records from CCH Tax Schedules to manual Tax Schedules and check this box. Failure to do so will result in a refresh that does nothing.

TRANSFER TAX CODE EXEMPTIONS WHEN SCHEDULE CHANGES (DROP BOX): Select one of the following options:

- **Standard Processing Logic** – when a Schedule is changed if there are any Tax Codes which are the same from old schedule to new, then the exemption numbers on those Tax Codes will transfer to the corresponding Tax Codes on the new Schedule.
- **Yes** – We will transfer the first exemption number we find on the old Schedule and apply it to every Tax Code on the new schedule.

Roles Maintenance

The following Tasks have been added to Accounts Receivable, Miscellaneous tasks:

- Sales Tax Automation Import
- Customer and Documents Refresh
- Obsolete Sales Tax Schedule Purge



It is recommended that an import is run, after conversion, in order to repopulate the 'Created by Sales Tax Import' check box.

Extended Solutions

You should visit this Setup screen after each upgrade or reinstallation of this Extended Solution.

Operation

This Extended Solution has been designed to create Sales Tax Codes and Tax Schedules using the files that contain the Zip code/Sales Tax information from the CCH Group as part of their product ZIPSALLES Database. (<http://tax.cchgroup.com/salestax/>)

Sales Tax Automation Import File Processing

When you select the menu option for the import, the following prompts will appear (Figure 2):

DIRECTORY IMPORT FILES ARE IN: Enter the directory from which you want to import files.

SALES TAX RATE IMPORT FILENAME: Enter the filename you want to use for the Sales Tax Rate import file. It is recommended that you use the default from Setup.

FREIGHT TAXABLE IMPORT FILENAME: Enter the filename you want to use for the Freight Taxable import file. It is recommended that you use the default from Setup.

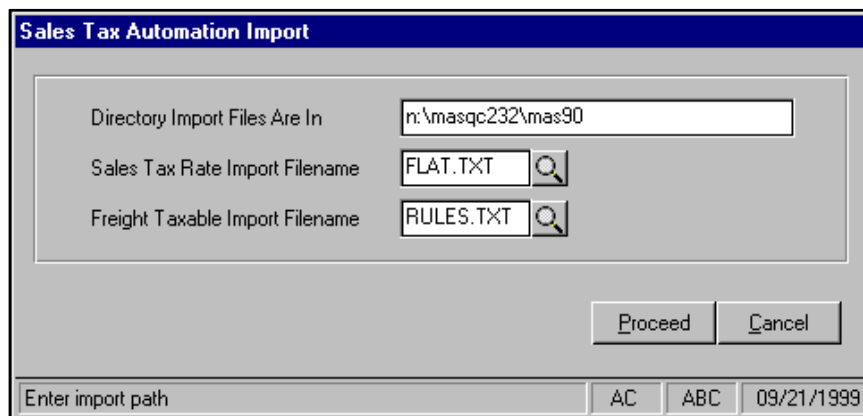


Figure 2

After clicking 'Proceed', Sales Tax Codes and Sales Tax Schedules will be created. Each Schedule which is created by the import will be denoted as such in the record; these Schedules will be associated with a ZIP Code. Depending upon the number of records, this import process could take many hours.

Standard MAS 90 MAS 200 tax processing does not support freight taxability by shipping method or address. The AR-1129 import will set the Freight Taxable flag to 'Y' if any aspect of freight is deemed taxable by the CCH Group ZIPSALLES Database file.

Extended Solutions

Tax Limits are not supported in the import. If Tax Limits apply, then you will need to enter these manually.

Sales Tax Schedule Maintenance

A 'Created by the Sales Tax Import' flag has been added to Sales Tax Schedule Maintenance (Figure 3). The Import will set the value to 'Y' if the Tax Schedule exists in both the AR-1129 Zip Code Tax Schedule file and the standard Tax Schedule file. All others will be set to 'N.'

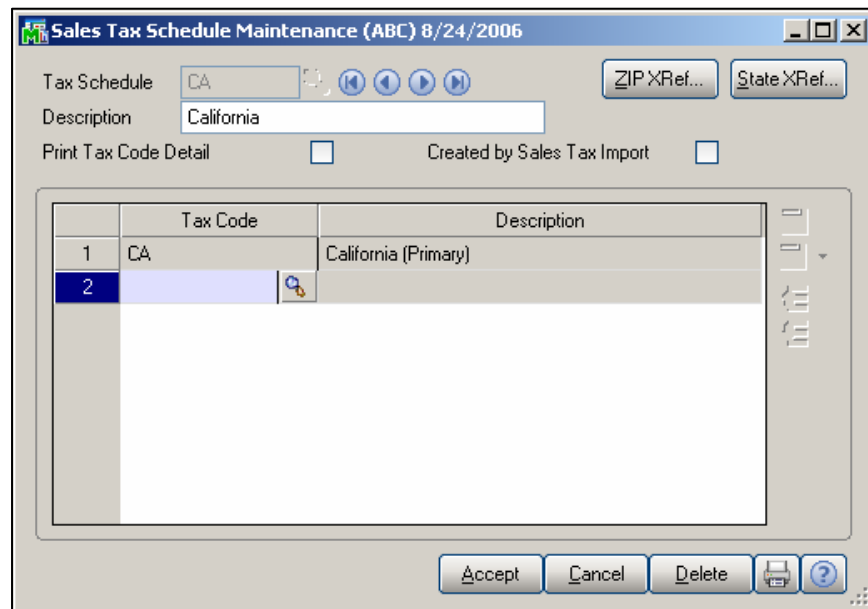


Figure 3

Defaulting Customer's Tax Exempt Number When Tax Schedule Changes

If you checked the 'Default Customer's Tax Exempt Number when Tax Schedule changes' box in Setup, and if

- The customer has a value in the Exemption Field of the first Tax Code on their Customer Masterfile Tax Schedule
- The Tax Schedule on the document is different than what is stored in the Customer Masterfile AND
- This change results in a blank in any of the Exemption fields

then the first Customer's Exemption Number from the first Tax Code of the schedule will default into the document's Exemption Number field, found in the Tax Detail portion of the Total Tab. Each time the Tax Schedule is changed, the program will perform the defaulting again.

Customer and Documents Refresh

When accessed it will present the user with the following options for files which can be refreshed (Figure 4). If the Sales Order module is not installed, then Customer Ship To, S/O Orders and S/O Invoices will not be available.

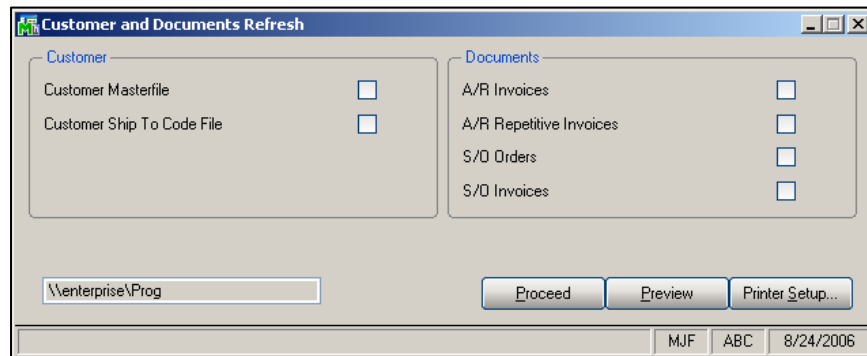


Figure 4



It is recommended that the user not check all of the refreshes at once. They should be processed in the following order:

1. Customer Masterfile
2. Ship To Code file
3. Any documents

Any exceptions should be corrected before electing to perform the next refresh. This could prevent duplicate data entry when the same exception applies to multiple instances for the same Customer.

Once the user has selected the applicable file(s) for refresh and elected to 'Proceed' this program will compare the record's existing Tax Schedule to what the program thinks is the correct one based on either the Customer's Zip Code or the Ship To Code's Zip Code or the document's Ship To Address Zip Code and whether or not the user has elected to maintain their own Tax Schedules.



Sales Tax Recalculation will be performed during the document refresh process.

If there are multiple Tax Schedule options for a Zip Code, then this Extended Solution will invoke this logic:

Is the current Schedule on the record one of the options?

'Yes', then no change will be made

'No', then the first Schedule is selected, and a record of that fact will appear on the exception report.

S/O document refreshes will be further modified when multiple schedules exist to look to

Extended Solutions

the Customer, Ship To file to see if the Ship To Code on the Order/Invoice references the same Zip Code, if so then we will use that Tax Schedule. If there is no Ship To Code on the Order/Invoice OR if it's an A/R document, then it will look to the Customer Masterfile's Zip Code.

Refresh Report

After a refresh has completed, a report will be generated for each refresh type selected. The Customer (Figure 5) and Ship To Code refresh reports print in Customer number order and additionally sorted by Ship To Code when applicable.

ABC Distribution and Service Corp.					
Customer and Document Refresh - Customer Number					
Old Schedule	Old Tax Codes	Old Exemptions	Refreshed to Schedule	Tax Code	Exemption
01-AEF					
WI MLWMLW	WI	584739586898975	WICMLWMLW	WIC	584739586898975
	WI MLW	584739586898975		WICMLW	584739586898975
	WI MLWMLW	584739586898975		WICMLWMLW	584739586898975
01-AVNET					
WI WLWETR	WI	12-267542	WIARCIETR	WIA	12-267542
	WI WLW	12-267542		WIARCI	12-267542
	WI WLWETR	12-267542		WIARCIETR	12-267542
* Additional Tax Schedules for this ZIP Code: WIBWLWETR					
01-BRESLIN					
WI RCNMKW			WICRCNMKW		
* Additional Tax Schedules for this ZIP Code: WICWKSMLW, WICWLWMKW					
01-HILLSE					
WI WKSMBR			WI WKKWKS		
* Additional Tax Schedules for this ZIP Code: WICWKKMBR					

Figure 5

The Document refresh reports (Figure 6) will print in Document number order. The report will detail the old and new Sales Tax Amount, Tax Schedules, the associated Tax codes as well as any Exemption numbers associated with each Tax Code. If there are multiple Tax Schedules available for the zip code, the additional options will be listed detailing which Tax schedule was assigned (as well as other Tax Schedules that are possible for this Zip code) and whether an Exemption code was updated (based upon setup) or needs to be changed.

ABC Distribution and Service Corp.					
Customer and Document Refresh - S/O Invoice Number					
Document/ Old Schedule	Old Tax Codes	Old Tax Amt/ Old Exemptions	Refreshed to Schedule	Tax Code	New Tax Amt/ Exemption
0100056		0.00			0.00
CA RVRMVL	CA	12-6754399	CAARVMVL	CAA	12-6754399
	CA RVR	12-6754399		CAARVR	12-6754399
	CA RVRMVL	12-6754399		CAARVMVL	12-6754399
0100057		291.99			258.08
CA RVRMVL	CA		CABRVMVL	CAB	
	CA RVR			CABRVR	
	CA RVRMVL			CABRVMVL	
0100058, Skip to Code:1		0.00			0.00
WI WKSNER	WI	584739586898975	WIAWKSNER	WIA	584739586898975
	WI WKS	584739586898975		WIAWKS	584739586898975
	WI WKSNER	584739586898975		WIAWKSNER	584739586898975
0100061		0.00			0.00
CA ORNCMR	CA	123456789	CA ORECMR	CA	123456789
	CA ORN	123456789		CA ORE	123456789
	CA ORNCMR	123456789		CA ORECMR	123456789
0100063		0.43			28.31
WI WKSNER	WI	584739586898975	WI WKKWKS	WI	
	WI WKS			WI WKK	
	WI WKSNER			WI WKKWKS	

Figure 6

Obsolete Tax Schedule Purge Utility

An Obsolete Tax Schedule Purge Utility has been added (Figure 7).

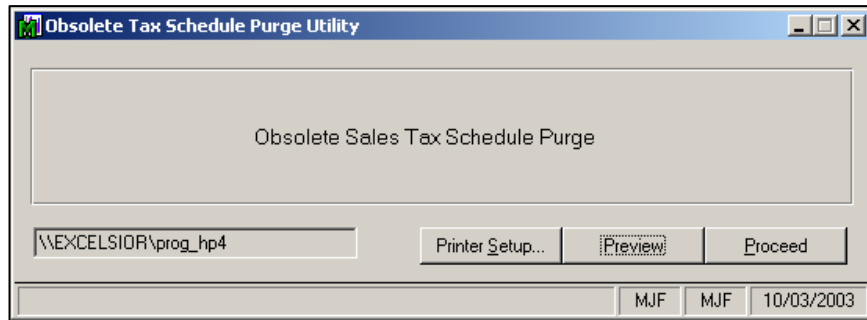


Figure 7

Extended Solutions

When it is run, it will compare all records in standard Tax Schedule Maintenance that have flags set to 'Y' to all existing entries in Zip Code Tax Schedule file. Those standard Tax Schedules marked 'Y' that do not exist in both files and that are not currently in use **by a document** will be deleted from the Standard File.

A log will print after the utility has run, listing those Tax Schedules that might have been deleted, but did not because they were present on a document (Figure 8). It will contain the Tax Schedule and the Order Number(s)/Invoice Number(s).

Obsolete Sales Tax Information Purge Utility		MJF Company Code
		Sales Tax Codes Still Active on Invoices
Tax Schedule	Order/Invoice Number(s)	
NJ SLMDGP	0000077-AR	0000242-SO

Figure 8

Zip Code/Sales Tax Updates

The files used by the import to update the Sales Tax and Freight Taxable information are provided by the CCH Group as its Product 'ZIPSALLES Database.' The two files required for AR-1129 are described in the CCH Group ZIPSALLES Database User Guide as the 'Alternate Flat File' and 'Rules' file. As of December 3, 1997, these files are called 'FLAT.TXT' and 'RULES.TXT' on the ZIPSALLES release 2.0 Diskettes. It is the responsibility of the user to obtain updates and revisions of these files from the CCH Group Inquires regarding current versions, downloading files from the CCH Group website (<http://tax.cchgroup.com/salestax/>), and applicability of any updates should be directed to the CCH Group.

What's New

With the 09-15-06 release:

- Upgraded to Business Framework

Upgrades and Compatibility

The installation CD is labeled with the version of the MAS 90 MAS 200 module for which this Extended Solution was prepared. This Extended Solution will check its compatibility with

Extended Solutions

the appropriate MAS 90 MAS 200 modules and will be disabled if an incompatibility is found. If you upgrade your MAS 90 MAS 200 modules, this Extended Solution must be upgraded as well. Your MAS 90 MAS 200 dealer can supply this upgrade.

Documentation

Only changes made to the standard operation of MAS 90 MAS 200 have been documented in this manual. Operations not documented in this manual are standard procedures of MAS 90 MAS 200 processing. Standard MAS 90 MAS 200 processes, data entry screens, inquiry screens, reports, updates, etc., have not been changed unless addressed in this document.

Parts of this document may refer to the *Specific Purpose Rule*. When referenced, the described feature was developed for a specific client to its specifications and may not conform to generally accepted MAS 90 MAS 200 standards and procedures. These features may or may not benefit you in your application of MAS 90 MAS 200.

Acknowledgments

© 2005 Sage Software, Inc. All rights reserved. Sage Software, MAS 90 and MAS 200 are registered trademarks or trademarks of Sage Software, Inc. All other trademarks are the property of their respective owners.

Addendum**Tax Rates (FLAT.TXT)**

<i>Position</i>	<i>Length</i>	<i>Description</i>
1	5	Zip Code
6	28	City
34	25	County Name
59	2	State
61	1	County Default?
62	1	General Default?
63	5	Fips Code
68	8	State Tax
76	8	County
84	8	County Local
92	8	City
100	8	City Local
108	8	Combined
116	8	State Use Tax
124	8	County
132	8	County Local
140	8	City
148	8	City Local
156	8	Combined
164	8	Effective Date
172	10	Geographical Code
182	1	Inside/Outside City Flag

Freight Taxability (RULES.TXT)

<i>Position</i>	<i>Length</i>	<i>Description</i>
1	2	State Code
3	28	County
31	25	City
56	1	Unused
57	1	'T' – Applies to Tax
58	1	'U' – Applies to Use Tax
59	1	'T' – Freight is always taxable
		'E' – Freight is taxable based on the exception codes
60	10	Freight Taxability Exception Codes (for 'E' above)

SAGE MAS 90

SAGE MAS 200

Extended Solutions

For Master Developers

A callable routine has been added that will return a field separated list of tax schedules for a given zip code.

CALL "..\AR\ARZ_XT;Schedule_List", Term\$, Comp\$, Zip\$, Schedule\$

Term\$! Mas90 Terminal control string
Comp\$! Mas90 Company code
Zip\$! Zip Code for lookup (Only first 5 characters will be used)
Schedule\$! Field separated List of Tax Schedules, could be null

 The Premier Provider of Effective Business Software Solutions

Regional Offices

Orange County, California 23161 Mill Creek Drive Laguna Hills, California 92653 Phone: (949) 583.9500 Toll Free: (800) 425.9843 Fax: (949) 583.9549 www.blytheco.com	Atlanta, Georgia 1100 Johnson Ferry Road, Ste. 450 Atlanta, Georgia 30342 Phone: (404) 841.6240 Toll Free: (800) 455.1368 Fax: (404) 841.6243 solutions@blytheco.com
---	---

Sage Software Business Partner of the Year

Complete Sage Software Solutions
Sage MAS 500 • Sage MAS 200 • Sage MAS 90
Sage BusinessWorks • Sage SalesLogix CRM • ACT! by Sage
Sage ABRA HRMS • Sage FAS • Sage MIP Fund Accounting & Fundraising

Offices in these cities & states:
Atlanta, GA • Chicago, IL • Los Angeles, CA • Orange County, CA • Tampa, FL
Colorado • Minnesota • Missouri • New Jersey • Ohio • Oklahoma • Pennsylvania
• South Carolina • Tennessee • Texas • Washington

National Presence - Local Touch